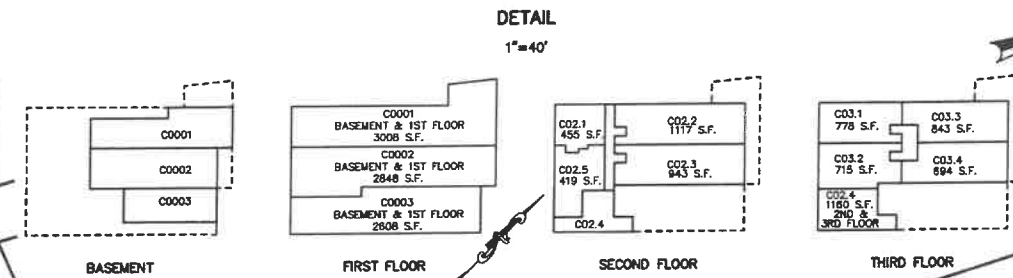
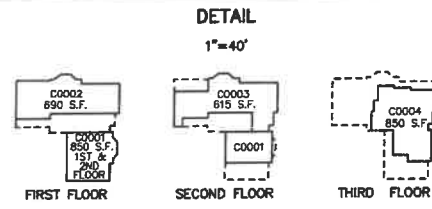
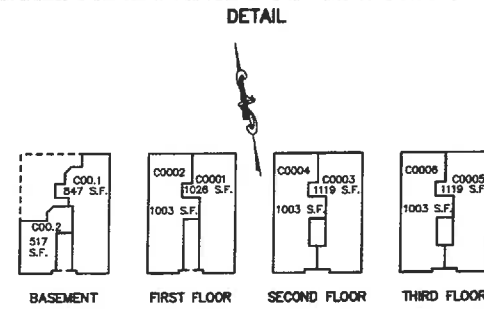


REVISIONS					REVISION PERFORMED BY	
DATE	BLOCK	LOT(S)	BRIEF DESCRIPTION		NAME OF PROFESSIONAL LAND SURVEYOR	NEW JERSEY LICENSE NUMBER
05/2016	2208	13, 14	Subdiv Lot 13 and add to Lot 14		Walter A. Mail	37201
05/2016	2209	2	Exempt - Township of Montclair		Walter A. Mail	37201
05/2016	2213	8, 9, 10	Corrected Lot Dimensions		Walter A. Mail	37201
01/2020	2205	2	Added Address		Walter A. Mail	37201



THIS MAP HAS BEEN GIVEN
A FORMAL CERTIFICATION
DIVISION OF TAXATION ON
NOVEMBER 6, 2006, SIGNED
BY THOMAS REILLY AND SANTO
DIDONATO AND ASSIGNED
SERIAL NUMBER 901

TAX MAP TOWN OF MONTCLAIR

ESSEX COUNTY
SCALE: 1" = 100'

NEW JERSEY
DATE: JULY 1972

JAMES P. PURCELL ASSOCIATES
EAST ORANGE, NEW JERSEY
JOSEPH A. TOMBRO, L.S.

TO SHOW CONDITIONS AS OF AUGUST 2021

REVISIONS				
DATE	BY	LIC. NO.	BLOCK	LOT
05/2016	ED CLAY	34842	2204	State Revisions
06/2018	ED CLAY	34842	2204	13
06/2018	ED CLAY	34842	2214	5
12/2019	ED CLAY	34842	2203	11
12/2020	ED CLAY	34842	2202	4-5
08/2022	ERICK E. MUFF	4337	2212	8

This sheet was prepared utilizing computer aided drafting. The previously approved tax map sheets were digitally scanned and edited using deeds, record plats and maps to reflect current conditions.

REVISED THROUGH JAN. 2000 BY THE
MONTCLAIR BUREAU OF ENGINEERING

REVISED THROUGH SEPT. 1977
BY THE SETCO GROUP

Revised Through Jan. 2013 by
Werner A. Mail, PLS Lic# 37201

Revised Through Jan. 2011 by
Werner A. Mail, PLS Lic# 37201

Revised Through Apr. 2008 by
Werner A. Mail, PLS Lic# 37201

Revised Through Dec. 2005 by
Werner A. Mail, PLS Lic# 37201