

MONTCLAIR'S OFFICE OF SUSTAINABILITY APRIL NEWSLETTER

Montclair's First Earth Fest!



Sunday, April 28th from 12 - 4 p.m. on South Park St. between Bloomfield Ave. and Church St.

Bring your friends and family to come and enjoy all Earth Fest has to offer! Join us for live entertainment, enlightening demos and activities, and an exciting electric vehicle display – together, let's celebrate and learn how to better protect our planet!

Earth Fest is a free event for all ages to come enjoy and learn about how easy it is to become a more environmentally conscious member of your community!

In this issue:

Montclair's First Earth Fest



April is Earth Month



Art in the Park: The Importance of Native Landscaping

Earth Fest is Sponsored by:

Montclair's Office of Sustainability

The Montclair BID

Drive Electric

Montclair Climate Action

Sierra Club

For vendor, volunteer, and sponsor requests, email mcunliffe@montclairnjusa.org



APRIL IS EARTH MONTH!

Attend exciting events all
month long!



Montclair Township's Earth Fest: Sunday, April 28th

On South Park St. (between Bloomfield Ave. and Church St.) from 12 – 4 pm. Sponsored by Montclair's Department of Sustainability, Drive Electric, the Montclair BID, the Sierra Club, and MCA.



Plant Based for the Planet: April 1st – 30th

The "Plant Based for the Planet" initiative returns to Montclair! 12 local restaurants are participating, offering innovative plant-based dishes. People can vote for favorites and win prizes.



NEEC Earth Day Celebration: Sunday, April 21st

The Northeast Earth Coalition is having an Earth Day Celebration on April 22nd. Visit the NEEC website to learn more about their schedule of Earth Day events from April 15 – 22.

Dispose Responsibly on Saturday, May 4th:

SHRED FEST: 9 am – 1 pm

Location: George Inness Annex
parking lot (North Fullerton Ave)

Securely dispose of and recycle your sensitive documents at Montclair's Shred Fest. Free for Montclair residents, you can bring up to four boxes or paper bags of documents up to 20 lbs each.

HOUSEHOLD HAZARDOUS WASTE (HHW)

COLLECTION: 8:30 AM – 4 PM

Location: Essex County DPW, 99 West
Bradford Ave, Cedar Grove, NJ

The Essex County Utilities Authority sponsors a drop-off for residents to dispose of HHW in an environmentally-friendly manner. For a comprehensive list of accepted and prohibited items, visit www.ecuanj.com.

For more information about any of these upcoming events, please visit Montclair's Office of Sustainability department webpage or email mcunliffe@montclairnjusa.org

Art in the Park: The Importance of Native Landscaping

Marrakech Cunliffe from Montclair's Office of Sustainability hosted a booth for the "Art in the Park" event that is part of the Art Walk event series sponsored by the Montclair BID. Marrakech had attendees make seed bombs with plant seeds native to New Jersey. She taught residents the importance of native landscaping and the benefits of incorporating native plant species into outdoor spaces wherever possible.

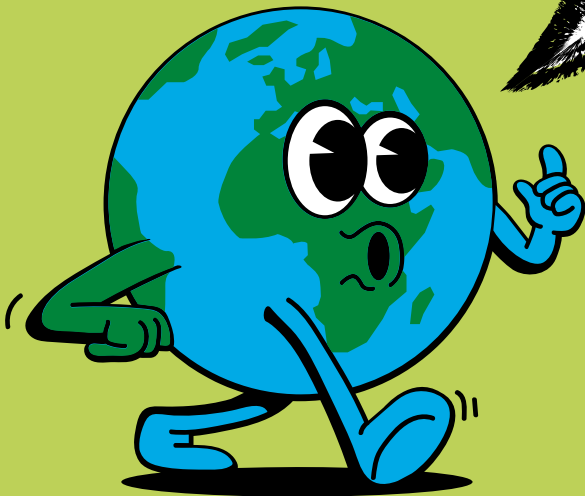


Why is Native Landscaping Important?

Understanding native plants in your area is crucial for ecological balance, resource conservation, and resilience to climate change. Native plants support local wildlife, require fewer resources for maintenance, and have cultural significance. Utilizing native species promotes sustainable landscapes, preserves biodiversity, and reduces long-term care costs. Access more resources including species databases on our department page: [Native Plants for Montclair](#).



**WELCOME
TO OUR FIRST
OFFICIAL DEPT.
NEWSLETTER!**



Do you want to know more about the topics in this newsletter? Are you interested in volunteering for initiatives/projects with our department? Feel free to reach out!

 mcunliffe@montclairnjsa.org